



North Exposure



South Exposure

Click on one of these illustrations to find a plan specifically tailored to the direction your house faces!

The Directional Challenge

When it comes to planting your front foundation, the first thing you need to know is what direction it faces. That'll help you determine what will grow best there.

Each direction has its own set of problems. On the north you have shade, winter winds and moisture that often stays in the

soil longer than other spots. A south foundation has scorching sun and often needs constant watering because moisture evaporates quickly. Depending on the soil, eastern exposures can have even moisture and not much wind, but full-sun plants will probably not be happy here. And finally, if your house faces west, what you think is part shade in reality is

better for plants that like full sun. And winds can dry out plants very quickly.

We've taken all of these factors, and more, into consideration as we've put these four plans together, one for each direction. One of these design solutions is sure to dress up your front foundation in style. □

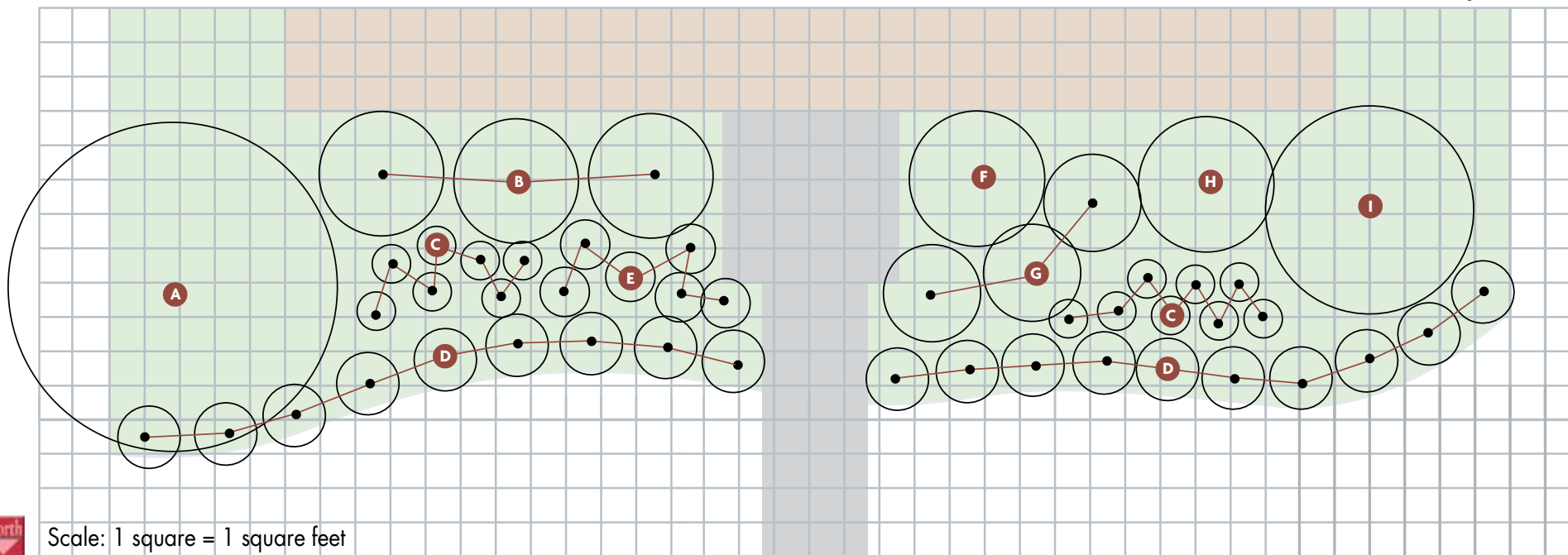
— Jim Childs



East Exposure

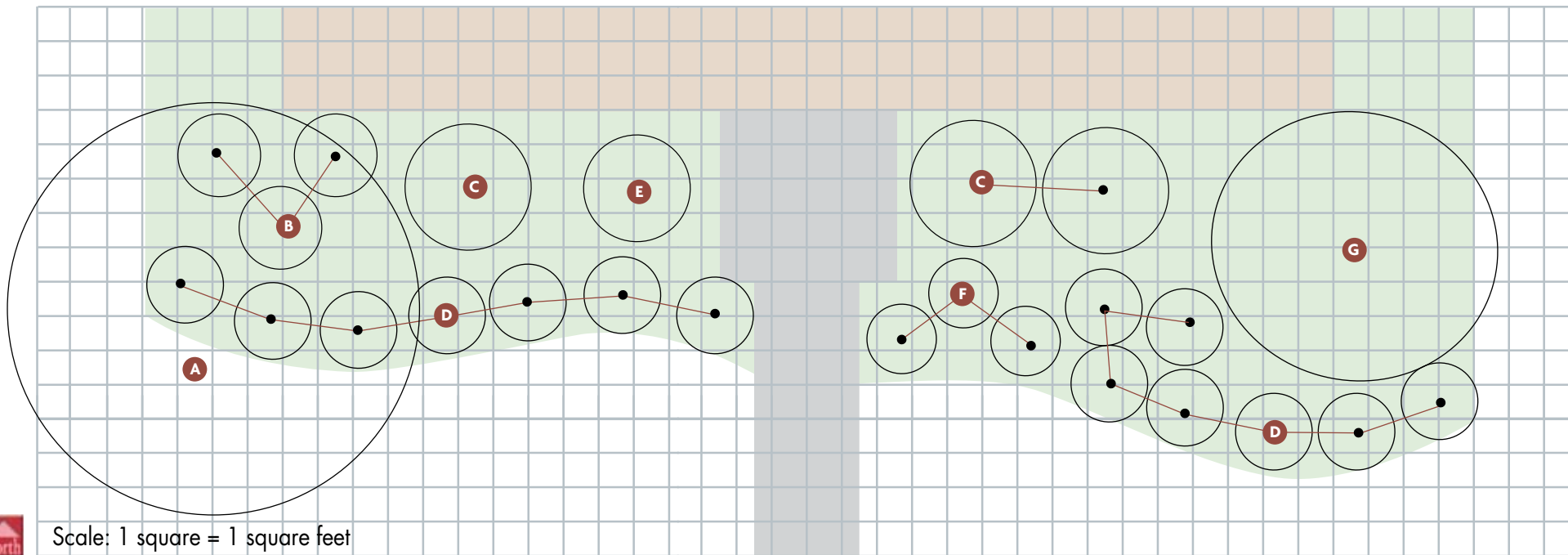


West Exposure

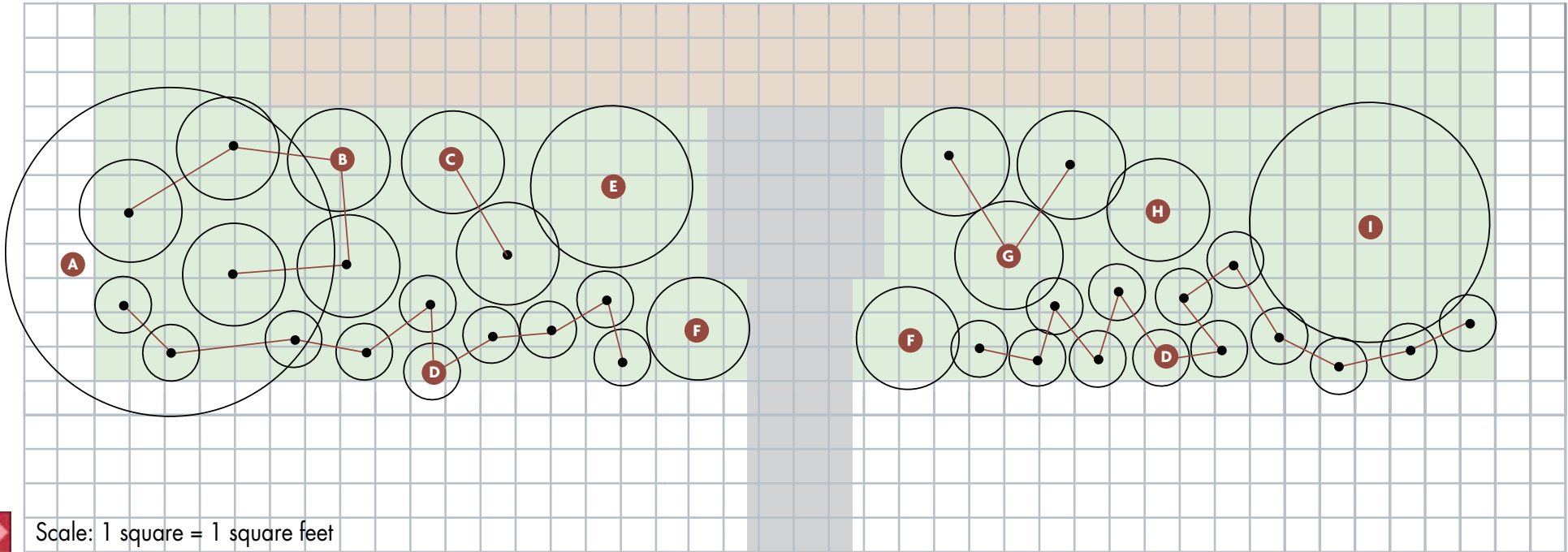


Code	Plant Name	No. to Plant	Blooms	Type	Cold/Heat Zones	Height/Width	Special Features
A	Common witchhazel <i>Hamamelis virginiana</i>	1	Yellow-orange; fall	Shrub	3-8/8-1	15 ft./10 ft.	Large shade-tolerant shrub filters some sun from the east
B	Yew <i>Taxus xmedia 'Densiformis'</i>	3	NA	Evergreen shrub	5-7/7-1	4 ft./4 ft.	Dark green shade-tolerant evergreen; good for year-round interest
C	Solomon's seal <i>Polygonatum odoratum pluriflorum 'Variegatum'</i>	15	White; spring	Perennial	3-8/8-1	30 in./12 in.	Elegant arching stems with variegated leaves; spring, summer and fall interest
D	Hosta <i>Hosta lancifolia</i>	19	Lavender; late summer	Perennial	3-9/9-1	12 in./18 in.	Mass of clean green leaves help tie the design together
E	Japanese painted fern <i>Athyrium niponicum pictum 'Ursula's Red'</i>	6	NA	Perennial	5-8/8-1	18 in./18 in.	Silvery foliage brightens up shaded north exposure; prefers moist soil
F	Five-leaf aralia <i>Eleutherococcus sieboldianus 'Variegatus'</i>	1	Green-white; spring	Shrub	4-8/8-1	8 ft./5 ft.	Variegated foliage even in full shade; spines on stems; tolerates pollution
G	Rhododendron <i>Rhododendron 'Olga'</i>	3	Pink; spring	Evergreen shrub	4-8/8-1	3 ft./3 ft.	Small evergreen leaves; may rebloom in fall; excellent spring color
H	Hydrangea <i>Hydrangea arborescens 'Annabelle'</i>	1	White; late summer	Shrub	4-9/9-1	4 ft./5 ft.	Long-lasting flowers change from white to papery brown and last into winter
I	Arborvitae <i>Thuja occidentalis 'Brabant'</i>	1	NA	Evergreen shrub	2-7/7-1	12 ft./6 ft.	Soft, fragrant foliage; narrow form allows some late sun in and blocks winter wind

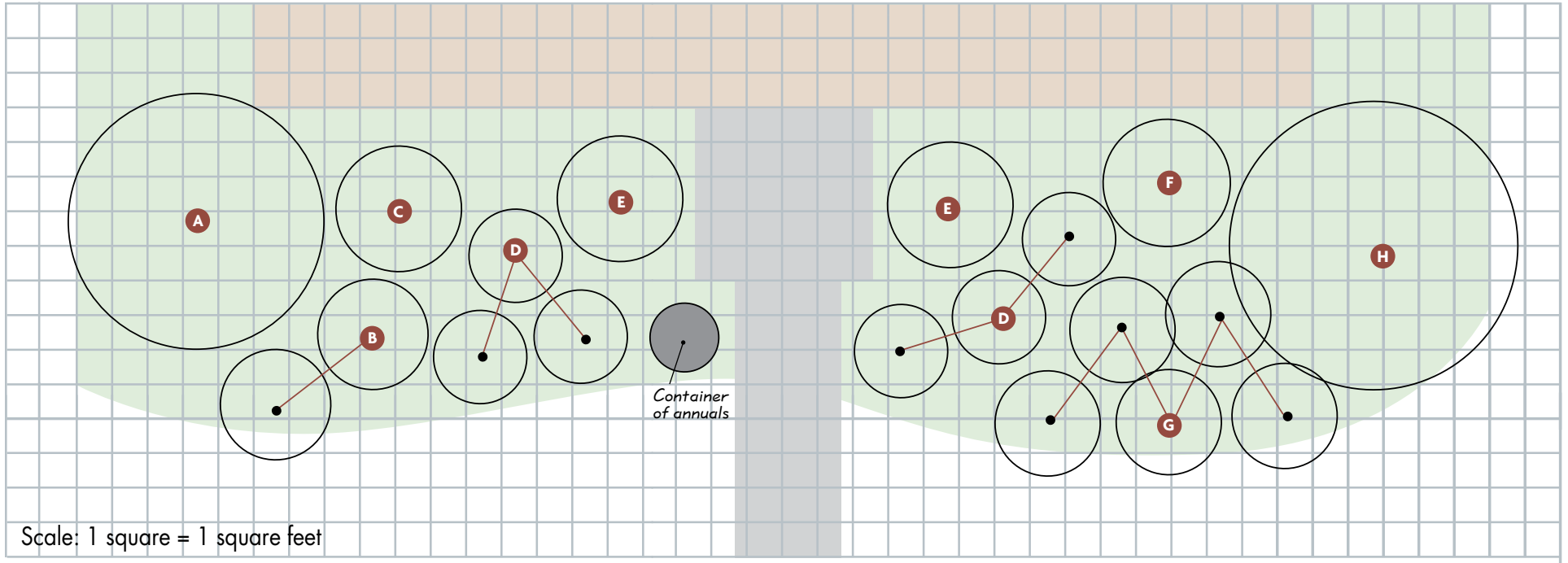




Code	Plant Name	No. to Plant	Blooms	Type	Cold/Heat Zones	Height/Width	Special Features
A	Flowering crabapple <i>Malus Red Jewel™</i>	1	White; spring	Tree	4-8/8-1	15 ft./12 ft.	Small tree blocks hot afternoon sun; pink buds open white
B	Spirea <i>Spiraea japonica 'Little Princess'</i>	3	Rose pink; summer	Shrub	4-9/9-1	2 ft./3 ft.	Dense mound of small leaves; prune after flowers fade to keep the shrub tidy
C	Lilac <i>Syringa pubescens patula 'Miss Kim'</i>	3	Lavender-pink; late spring	Shrub	5-8/8-1	4 ft./4 ft.	Late-blooming lilac adds seasonal interest; can be clipped into a formal shape
D	Rose <i>Rosa 'The Fairy'</i>	14	Pale pink; summer	Shrub	4-9/9-1	2 ft./2 ft.	Lots of pink flower clusters for excellent summer color
E	Juniper <i>Juniperus chinensis 'Hetzii Columnaris'</i>	1	NA	Evergreen shrub	3-9/9-1	6 ft./3 ft.	Trained into a formal spiral shape, this evergreen draws attention to the door
F	Juniper <i>Juniperus procumbens 'Nana'</i>	3	NA	Evergreen shrub	3-9/9-1	10 in./24 in.	Low-spreading ground cover; very heat tolerant; good winter interest
G	Burning bush <i>Euonymus alatus</i>	1	NA	Shrub	4-9/9-1	8 ft./8 ft.	Large shrub to filter morning sun and keep nearby plants in cool shade longer



Code	Plant Name	No. to Plant	Blooms	Type	Cold/Heat Zones	Height/Width	Special Features
A	Japanese maple <i>Acer palmatum</i> 'Bloodgood'	1	NA	Tree	5-8/8-1	12 ft./10 ft.	Red foliage holds color in part shade; one of the hardiest cultivars
B	Hosta <i>Hosta</i> 'Halcyon'	5	Lavender; summer	Perennial	3-9/9-1	20 in./36 in.	Blue foliage cultivar does well in part to full shade
C	Daphne <i>Daphne xburkwoodii</i> 'Carol Mackie'	2	Pink; spring	Shrub	4-7/7-1	3 ft./3 ft.	Semi evergreen; variegated foliage; fragrant flowers
D	Hakonechloa <i>Hakonechloa macra</i> 'Aureola'	23	NA	Perennial	5-9/9-1	18 in./24 in.	Grass with gold foliage will like the cool moist soil on the east side
E	Rhododendron <i>Rhododendron</i> 'Nova Zembla'	1	Red; spring	Evergreen shrub	5-8/8-1	5 ft./5 ft.	Evergreen leaves and large flower buds won't be damaged on an east exposure
F	Boxwood <i>Buxus</i> 'Green Mountain'	2	NA	Evergreen shrub	5-8/8-1	3 ft./3 ft.	Evergreen leaves will stay a bright green in part shade; pyramidal form
G	Hydrangea <i>Hydrangea macrophylla</i> 'Monred' (Red 'n Pretty®)	3	Red; summer	Shrub	5-9/9-1	4 ft./3 ft.	Flower color holds well out of hot afternoon sun
H	Yew <i>Taxus xmedia</i> 'Geers' Margarita™	1	NA	Evergreen	5-7/7-1	42 in./42 in.	Gold evergreen foliage won't burn on the east side of the house
I	Holly <i>Ilex cornuta</i> 'Burfordii'	1	White; spring	Evergreen shrub	6-9/9-1	10 ft./7 ft.	Dense evergreen with red berries for winter interest



Code	Plant Name	No. to Plant	Blooms	Type	Cold/Heat Zones	Height/Width	Special Features
A	Viburnum <i>Viburnum sargentii</i> 'Onondaga'	1	White; summer	Shrub	4-7/7-1	10 ft./10 ft.	Tough, durable shrub for a harsh exposure; ornamental red fruit
B	Barberry <i>Berberis thunbergii</i> <i>atropurpurea</i> 'Atropurpurea Nana' (Crimson Pygmy)	2	NA	Shrub	5-8/8-1	2 ft./3 ft.	Small, dense shrub with burgundy leaves; tolerates almost any conditions
C	Maiden grass <i>Miscanthus sinensis</i> 'Adagio'	1	Buff; late summer	Perennial	5-9/9-1	3 ft./3 ft.	Takes hot sun and harsh winds in stride; good winter interest
D	Fountain grass <i>Pennisetum alopecuroides</i> 'Hameln'	6	Buff; late summer	Perennial	5-9/9-1	2 ft./3 ft.	Airy filler plant is tough and durable for a west exposure
E	Juniper <i>Juniperus xpfitzeriana</i> 'Sea Green'	2	NA	Evergreen shrub	4-9/9-1	5 ft./5 ft.	Bright green foliage even in winter sun and dry winds; easy to shear for size
F	Smokebush <i>Cotinus coggygria</i> 'Velvet Cloak'	1	Burgundy; summer	Shrub	5-9/9-1	5 ft./4 ft.	Cut back to 1 ft. each spring to contain size; burgundy foliage adds summer color
G	Deutzia <i>Deutzia gracilis</i> 'Nikko'	5	White; early summer	Shrub	4-8/8-1	2 ft./3 ft.	Spring flowers and burgundy fall foliage; easily pruned if it grows too large
H	Tree lilac <i>Syringa reticulata</i> 'Ivory Silk'	1	Creamy white; summer	Tree	3-8/8-1	15 ft./10 ft.	Very hardy ornamental tree; blocks hot afternoon sun